

# AUSTRALIEN & OZEANIEN



Gebiet	Losnr.	Gebiet	Losnr.
<b>Aitutaki</b>	<b>100</b>	<b>Franz.-Ozeanien</b>	<b>141</b>
<b>Neusüd-wales</b>	<b>101 - 104</b>	<b>Gilbert- u. Ellice-Inseln</b>	<b>142</b>
<b>Queensland</b>	<b>105 - 108</b>	<b>Nauru</b>	<b>143</b>
<b>Südaustralien</b>	<b>109</b>	<b>Neukaledonien</b>	<b>144 - 145</b>
<b>Tasmanien</b>	<b>110</b>	<b>Niue</b>	<b>146</b>
<b>Victoria</b>	<b>111 - 113</b>	<b>Penrhyn</b>	<b>147</b>
<b>Australien</b>	<b>114 - 140</b>		

# Aitutaki - Neusüdwaales

Losnr.

Katalognr. Erhalt. Ausruf



**Los 100**



**Los 101**



**Los 102**

## Aitutaki

P100 1983, AITUTAKI: Commonwealth Day complete set of four se-tenant stamps 'Bananas, flowers, boat and William Bligh with map of Aitutaki' in a complete IMPERFORATE PROOF sheet with eight blocks of four all with MISSING GOLD printing, MNH and scarce (M)

456/59 proof \*\* 70,-

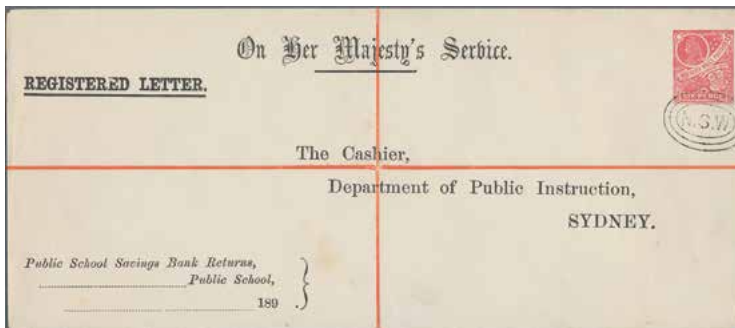
## Neusüdwaales

P101 1849, PAID AT PORT FAIRY, faint strike of the red boxed cancellation on double rated ("1/10") letter to Portland, ms. "Registered" alongside and showing on backside crowned oval PORT FAIRY and PORTLAND postmarks.

✉ 120,-

P102 1856, (6d) REGISTERED salmon and indigo, deep fresh colour and full broad margins all around, signed Grobe and Pfenninger, SG 102.

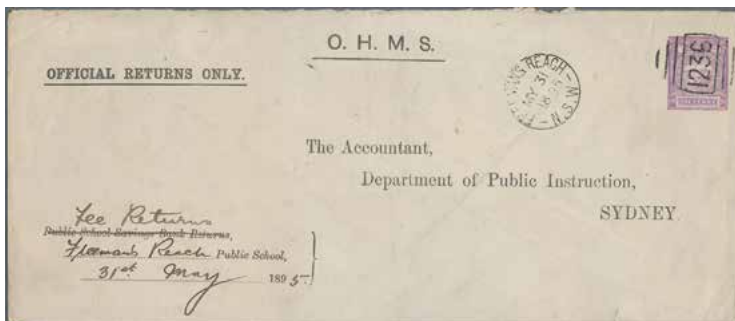
20ax, SG 102 ☉ 100,-



**ex Los 103**



**Los 105**



**ex Los 104**



**Los 106**

## Neusüdwailes - Tasmanien

Losnr.		Katalognr.	Erhalt.	Ausruf
<b>Neusüdwailes - Ganzsachen</b>				
P 103	1888/1891, OFFICIAL 'O.H.M.S.' ENVELOPES, group of 4 envelopes intended for UPU distribution, comprising 4d brown legal size envelope 'CROP REPORTS', c.t.o. triple oval "N.S.W."; furthermore three registered legal size envelopes with preprinted address 'Department of Public Instruction Sydney', i.a. 5d green with ovp 'SPECIMEN' and 6d violet & 6d carmine, both c.t.o. with triple oval "N.S.W.". Scarce group in F/VF condition. (T)	H&G D B13, D C1, D C2a, D C3b	GA	70,-
P 104	1890/1900, OFFICIAL 'O.H.M.S.' ENVELOPES, group of five used legal size envelopes, comprising 1d violet 'jubilee' envelopes with preprinted address 'Department of Public Instruction Sydney' (three different types) sent from Enmore, Freeman's Reach (numeral "1236", rated RR) or Wickham; furthermore one 6d carmine QV registered envelope sent from Southgate (numeral "958", rated RRR) to the Department of Public Instruction Sydney and one 1d rose 'coat of arms' envelope "On Public Servic Only" (For Members of Parliament) sent from Lithgow to the Mines Dpt. Sydney. Envelopes with minor traces of usage (folds etc.) as should be expected, otherwise fine condition. Scarce group! (T)	H&G ex D B10 (3), D B16, D C3	GA	70,-
<b>Queensland</b>				
P 105	1898, QV 2½d., plate proof in colour "purple-brown" on watermarked paper, issued design, left marginal block of four, mint original gum with hinge remnants, double vertical perfs at left (orderly). Ex Yardley.	refers to SG 236/39	*	70,-
P 106	1898, QV 2½d., plate proof in colour "slate" on watermarked paper, issued design, left marginal block of four, mint original gum with hinge remnants, double vertical perfs at left (orderly). Ex Yardley.	refers to SG 236/39	*	70,-
P 107	1898, QV 2½d., plate proof in colour "turquoise" on watermarked paper, issued design, (previous left marginal) block of four, mint original gum with hinge remnants. Ex Yardley.	refers to SG 236/39	*	70,-
P 108	1898, QV 2½d., plate proof in colour "brownish purple/blue" on watermarked paper, issued design, block of four, mint original gum with hinge remnants. Ex Yardley.	refers to SG 236/39	*	70,-



Los 107



Los 108

### Südaustralien

P 109	1909 Complete "Australian Pictorial Letterette" with illustrated front and eight views of Adelaide inside, sender's note "Clark Street, Wayville, South Australia", addressed to Germany, franked 1894-1906 2½d. blue tied by Adelaide machine datestamp, with minor blemishes but still fine.		✉	50,-
-------	--	--	---	------

### Tasmanien - Ganzsachen

P 110	1901/1902, 2d violet on light blue pictorial lettercard, group of 4 used examples with different views, uprated with ½d tablet QV (SG 216) each, comprising 'CATARACT GORGE, LAUNCESTON' from Penguin to Vienna in Austria; 'LAKE HARTZ' from Launceston to Salzburg in Austria; 'RIVER DERWENT, NEW NORFOLK' from Hobart to Bern in Switzerland and 'LAUNCESTON' sent from Ulverstone to Malmö in Sweden. F/ VF condition.	H&G A 2/2, 4,5,6	GA	80,-
-------	---	---------------------	----	------

# Victoria

Losnr.

Katalognr. Erhalt. Ausruf



## Los 109

### Victoria

- P 111 1859, 6d blue on lady`s envelope addressed to Buxtehude in the Kingdom of Hanover showing AUSTRALIE SUEZ AMB 24 MARS 59 in red and very scarce boxed tax cancellation "F.39" (vdL 1174) in black - both on front. SOUTH YARRA VICTORIA skeleton in black, MELBOURNE, PARIS and red AUS FRANKREICH PER AACHEN transit - all on the backside as well as light boxed BUXTEHUDE upon arrival. A delightful little cover for the connoisseur!
- P 112 1914 Pictorial Letterette Melbourne with eight photographs inside and illustrated 'Roo' front, used from Melbourne to Burnley, franked Kangaroo 1d. red tied by "MELBOURNE/20 APR 14" machine datestamp, with light traces of ageing, good, and most attractive.

12 ☒ 450,-

SG 2 (Australia) ☒ 50,-



## ex Los 110



## Los 111

### Victoria - Ganzsachen

- P 113 1901, 1d QV pictorial postcard commemorating the "Commonwealth of Australia", complete set of 5 used postcards in different colours dark grey, blue green, grey green, lilac brown and ochre, all five cards uprated with ½d QV and sent to foreign destinations (four to Germany, one to Austria). F/VF condition.

H&G 23 GA 50,-

## Australien

Losnr.

Katalognr. Erhalt.

Ausruf



Los 112

### Australien

- |       |  |                   |       |
|-------|--|-------------------|-------|
| P 114 | 1916/1933/1942 Destination MEXICO: One picture postcard Sydney-Mexico City (1916), a registered cover Adelaide-Mexico City (1933) and a censored registered cover from South Brisbane to Guadalajara, with KGV. resp. KGVl. frankings, fine.   | ☒                 | 50,-  |
| P 115 | 1919 Destination ARGENTINA: Cover from Ballarat, Vic. to Buenos Aires franked by 1919 KGV. 1½d. black-brown horizontal pair tied by "BALLARAT/21 MAR 19" machine datestamp, and on the reverse with Ballarat despatch c.d.s. and Buenos Aires '26 MAY 1919' arrival dater. Cover with a little needle-hole (below franking), fine.   | SG 51(2) ☒        | 50,-  |
| P 116 | 1921/1938 ca., MARITIME MAIL, group of 5 covers from Sydney each with New Zealand 'Loose Letter' datestamps, comprising AUCKLAND N.Z. LOOSE LETTER cds (3 items) on 1930 printed matter cover with single 1d green KGV addressed to Niue; on 1937 'late fee' cover with single 4d yellow-olive KGV addressed to San Francisco USA and on 1938 cover with single 3d blue '150th Ann. New South Wales' addressed to Wellington; furthermore WELLINGTON N.Z. LOOSE LETTER cds (2 items) on 1921 cover with pair 2d orange KGV addressed to Christchurch and on 1929 cover with 1d green + 3d ultramarine KGV addressed to New York. F/VF condition. Scarce! | SG ex 62/194 ☒    | 100,- |
| P 117 | 1930 Destination DUTCH EAST INDIES: Two covers from Sydney to Macassar, Celebes 'Via Sourabaya, Java' (endorsed), one 'Per Aerial Mail via Brisbane' and also endorsed 'Per S.S. "Malabar"' franked KGV. 3d. ultramarine and 1929 Air 3d., the other franked KGV. 3d. and 1d. green, fine.   | SG 86, 100, 115 ☒ | 50,-  |



ex Los 113



ex Los 114

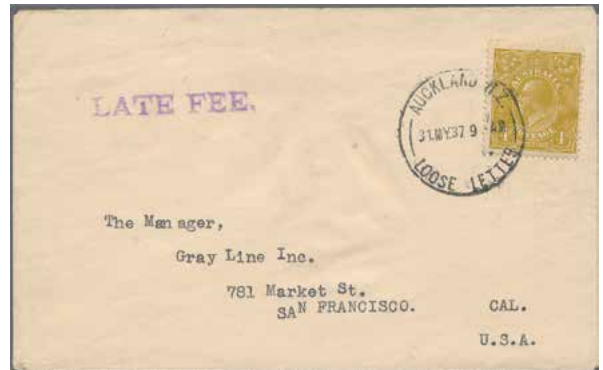
## Australien

Losnr.

Katalognr. Erhalt. Ausruf



Los 115



ex Los 116

- |       |  |             |      |
|-------|--|-------------|------|
| P 118 | 1931/1945 Destination ICELAND: Two covers to Reykjavik, Iceland, one from Sydney in 1931, the other from Scone, N.S.W., fine. A very scarce destination.   | ☒           | 50,- |
| P 119 | 1932 Destination HAWAII: Registered cover from Brisbane to Honolulu franked by Kangaroo 6d. brown, Wmk Mult Crown over A, tied by "REGISTERED BRISBANE/1 MR 32" c.d.s., Reg. label and h/s alongside, and on the reverse with a second stroke of despatch c.d.s. as well as Honolulu '18 MAR 1932' arrival datestamp, with a few little traces of usage/ageing but still fine. | SG 107 ☒    | 50,- |
| P 120 | 1936 Destination ARGENTINA: Registered and censored cover from Mackay to Buenos Aires franked by six singles of 1931 KGV. 1d. green tied by "MACHAY QUEENSLAND/31 DE 36" c.d.s., Reg. label and censor h/s alongside, and on the reverse with despatch, various transit (Brisbane et al.) and '8 MAR 37' arrival datestamps, fine and attractive.                              | SG 125(6) ☒ | 50,- |



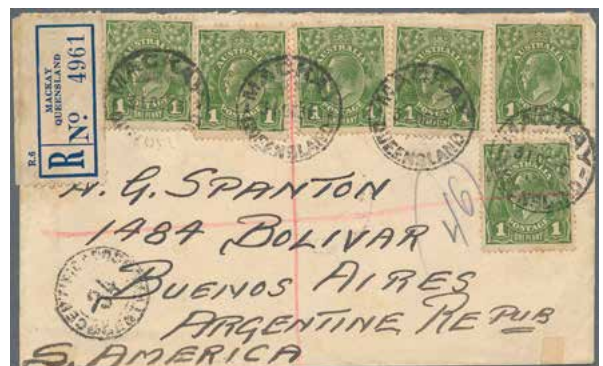
ex Los 117



ex Los 118



Los 119

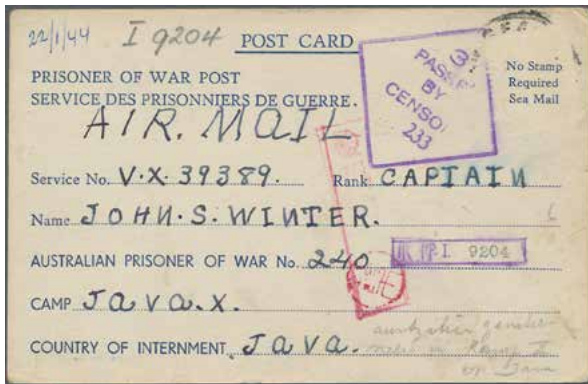


Los 120

## Australien

Losnr.

Katalognr. Erhalt. Ausruf



**Los 121**



**Los 122**

- |       |  |             |       |
|-------|--|-------------|-------|
| P 121 | 1944, Jan 22, pre-printed POW card from Victoria addressed to an Australian POW in Java (occupied by Japanese troops), stamp removed by censor. Mails to Australian POW in Japanese camps are scarce.  | ☒           | 200,- |
| P 122 | 1947 Destination CHINA: Airmail cover from Sydney to Shanghai franked 1937 1s6d. tied by Sydney '5 MR 47' slogan datestamp, violet handstamp "NOT ELIGIBLE FOR/AERIAL MAIL. FEE/DEFICIENT./SYDNEY NO. 2" with scarce fancy edges alongside, printed airmail label crossed out, and on the reverse with Shanghai native handstamp, fine.  | SG 153a ☒   | 50,-  |
| P 123 | 1940, AUSTRALIAN FORCES IN PALESTINE, 3d bright blue KGVI, tied by cds RAILHEAD PO R.M.1, 3.JE.40, single franking on registered cover to Sydney, on the frontside provisional 'R31' registration label with manuscript "731 T.P.O 2 A.I.F." along with boxed "Passed by Censor No. 566" cachet in red, transit and arrival marks on reverse. Envelope with minor traces of usage in overall fine condition. Scarce! | SG 168 ca ☒ | 70,-  |
| P 124 | 1941 Destination PALESTINE: Australian Field Post cover to Jerusalem franked KGVI. 3d. blue tied by "AUST BASE P.O. No.1/8 NO 41" c.d.s., with "AUSTRALIAN/ARMY (5/2)/ BASE P.O." h/s and numerals in m/s as well as square censor h/s "PASSED BY UNIT CENSOR/266" alongside, and on the reverse with 'Base Army P.O. 4/9 NO 41' and F.P.O. '11 NO 41' datestamps. Cover opened roughly but still good.              | SG 186 ☒    | 50,-  |



**Los 123**



**Los 124**

- |       |   |                    |       |
|-------|---|--------------------|-------|
| P 125 | 1995. 100 years of the Society for the Blind, 50 years of the Center for the Spastic Paralyzed, New South Wales. Complete issue (2 values) in an IMPERFORATE horizontal combination strip of 3 in order Michel #1488-1489-1488 (Paralyzed boy/Blind girl/Paralyzed boy). MNH. In all 3 imperforate stamps. Very rare! | 1488/89 Imperf. ** | 130,- |
|-------|---|--------------------|-------|

## Australien

Losnr.

Katalognr. Erhalt. Ausruf



**Los 125**



**Los 126**

- |   |                                 |
|---|---------------------------------|
| <p>P 126 1995. 100 years of the Society for the Blind, 50 years of the Center for the Spastic Paralyzed, New South Wales. Complete issue (2 values) in an IMPERFORATE horizontal combination strip of 3 in order Michel #1489-1488-1489 (Blind girl/Paralyzed boy/Blind girl). MNH. In all 3 imperforate stamps. Very rare!</p> | <p>1488/89 Imperf. ** 130,-</p> |
| <p>P 127 1996. Imperforate horizontal pair (also imperf. inbetween) of the complete issue (2 values) 'Couscous' showing 'Phalanger maculatus', and 'Phalanger ursinus'. MNH. Very rare!</p>   | <p>1540/41 Imperf. ** 70,-</p>  |
| <p>P 128 1996. Imperforate single souvenir sheet for the issue 'Couscous' showing 'Phalanger maculatus', and 'Phalanger ursinus'. MNH. Very rare!</p>   | <p>Bl. 21 Imperf. ** 100,-</p>  |



**Los 127**



**Los 128**



**Los 129**

### Australien - Australische Truppen in Japan

- |  |                                      |
|--|--------------------------------------|
| <p>P 129 1946, 3d brown KGVI with thin serifed trial ovp "B.C.O.F." in black, tied by cds 'AUST. ARMY P.O.241, 18.OC.46, on piece. VF condition. ACSC 750.-AU\$+</p> | <p>SG J3 var, BW J3PP(2)A Δ 50,-</p> |
|--|--------------------------------------|



## Australien

Losnr.

Katalognr. Erhalt. Ausruf



Los 130



Los 131

### Australien - Ganzsachen

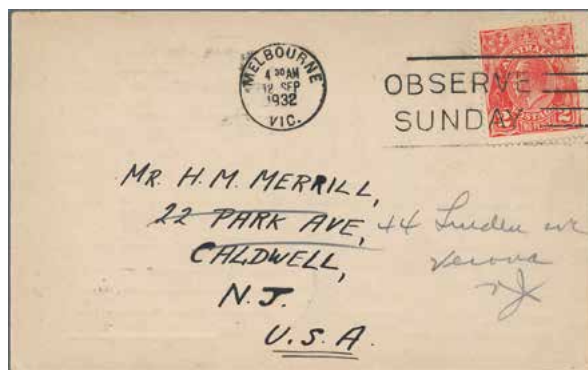
- |  |                          |
|--|--------------------------|
| <p>P 130 1919, 1 ½d black-brown KGV 'OS' engraved official wrapper, large part of the frontside with preprinted address 'The Director, Education Department, Melbourne', uprated with four copies of 1½d brown KGV 'OS' stationery cut-out from official postcard PO3, one cut-out from 1d red KGV 'OS' official postcard PO2 and one ½d green KGV stamp with perfin 'OS', all stamps tied by an indistinct (blurred) cds 'BE..', despite some blemishes and imperfections a great rarity of Australian Postal Stationeries. ACSC catalogue with no valuation for used examples and probably the first used example being offered! RR!</p> | <p>W03 GA/Δ 100,-</p>    |
| <p>P 131 1944, 7d blue KGV air letter, interior overprinted with Qantas Christmas Greetings cachet (large kangaroo and globe in blue), used c.t.o. from Sydney to Sutton Coldfield in England. VF condition.</p>   | <p>A2Cd GA 70,-</p>      |
| <p>P 132 1951, 7d blue KGV air-letter with 3-line overprint 'FIRST DIRECT AIR MAIL / MELBOURNE-CHRISTCHURCH / PER TASMAN EMPIRE AIRWAYS LIMITED' and boxed flight cachet in violet, used from Melbourne, 28.JE.51, to Christchurch. VF condition. Very scarce - only a few examples are known. AAMC 1274a, Cat \$325</p>   | <p>BW A4 var GA 70,-</p> |

### Australien - Stempel

- |   |                      |
|---|----------------------|
| <p>P 133 1932 "OBSERVE SUNDAY"- "MELBOURNE/12 SEP 1932" slogan datestamp used on "VK3JJ" radio card to the U.S.A., franked by 1931 KGV. 2d. golden scarlet, with Caldwell, N.J. 'OCT 13 1932' arrival datestamp on the reverse, fine. A SCARCE SLOGAN DATESTAMP USED ONE WEEK ONLY, COMMENCING 10 SEPTEMBER 1932.</p> | <p>SG 127 ☒ 50,-</p> |
|---|----------------------|



Los 132



Los 133

- |   |                      |
|---|----------------------|
| <p>P 134 1932 "OBSERVE SUNDAY"- "SYDNEY/15 SEP 1932" slogan datestamp used on postcard within Sydney, franked by 1931 KGV. 2d. golden scarlet, with a diag. cut top left corner of card otherwise fine. A SCARCE SLOGAN DATESTAMP USED ONE WEEK ONLY, COMMENCING 10 SEPTEMBER 1932.</p> | <p>SG 127 ☒ 50,-</p> |
|---|----------------------|

## Australien

Losnr.

Katalognr. Erhalt. Ausruf

### Australien - Besonderheiten

- P 135 1916/1917 ca., POW-MAIL: group of 4 different envelopes (Emery PSPE 3-6), comprising printed 25mm 'PRISONER OF WAR LETTERS/FREE' in double circle & sans serif 'SERVICE DES...' scarce domestic usage from Liverpool to Melbourne; ditto 25mm double circle with seriffed 'SERVICE DES...' from Liverpool to Neckarelz in Germany; 27mm 'FREE' Indicum with One Dash at the Base, from Liverpool to Heldrungen in Germany and 29mm 'FREE' Indicum with Three Dashes at the Base, from Berrima Camp to Germany. All four envelopes with 'Lieutenant-Colonel Holman' cachet and additionally boxed 'PASSED BY CENSOR S.D.' in violet on the 3 envelopes addressed to Germany. Some minor blemishes otherwise F/VF condition.

☒ 90,-



Los 134



ex Los 135

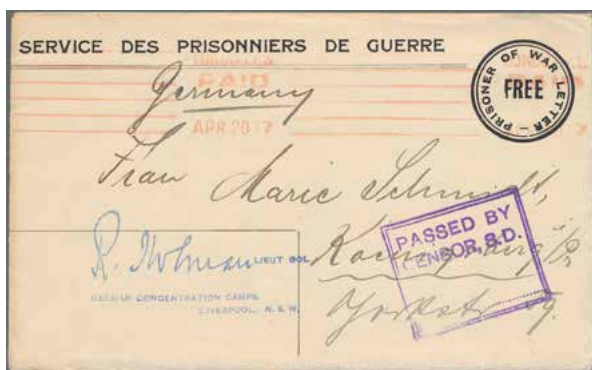
- P 136 1917 ca., POW-MAIL: two different envelopes (Emery PSPE 3 + 4) showing the same printing variety: lower part of "F" in "FREE" tapering, both envelopes with 'Lieutenant-Colonel Holman' cachet and boxed 'PASSED BY CENSOR S.D.' on the frontside, sent to locations in Germany each. VF condition. Scarce!

☒ 70,-

- P 137 1928/1932, AUSTRALIAN PAQUEBOT MAIL VIA HAWAII, group of three covers, comprising 3d ultramarine KGV, Die I, single on cover from Sydney, endorsed 'S.S.Sonoma', stamp tied on transit with machine cancel HONOLULU, 4.MAY1928, along with straight line "Packet Boat" h/s in lilac, addressed to Brandenburg in Germany; a second cover with single 3d ultramarine KGV, Die II from Sydney, sent by the same ship with transit machine cancel HONOLULU, 5.DEC 1930, along with straight line 'PAQUEBOT' h/s in violet, addressed to New York; the third cover with triple franking 2d scarlet KGV (double rate) tied on transit by duplex HONOLULU, 29.DEC.32, along with straight line 'PAQUEBOT' h/s in violet, addressed to Hamilton in Canada. Envelopes with minor traces of usage otherwise fine condition. Scarce!

SG 100,100b,  
127(3)

☒ 70,-



ex Los 136



ex Los 137

## Australien - Französisch-Ozeanien

Losnr.

Katalognr. Erhalt. Ausruf

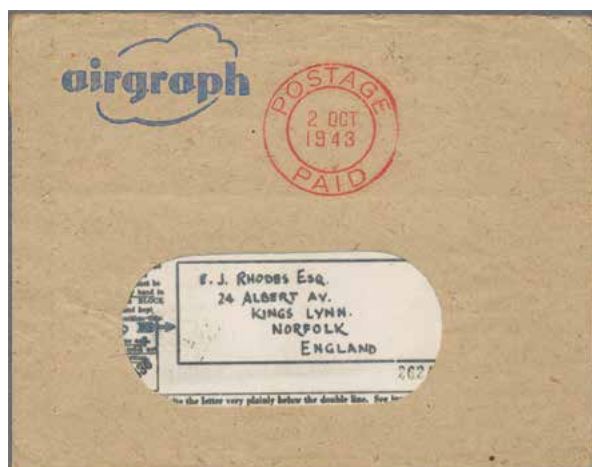


**Los 138**



**ex Los 139**

- |   |   |
|---|---|
| <p>P 138 1934, MARITIME MAIL, 2 x 1d green and 2 x 2d scarlet KGV, mixed franking on commercial cover addressed to Foxboro USA, stamps tied on transit with circular "WN." (Wellington) rubber h/s besides cds WELLINGTON N.Z. LOOSE LETTER, 22.JA.34, F/VF condition. Scarce and attractive maritime mail!</p>   | <p>SG 125 (2),<br/>127 (2)    ☒    50,-</p> |
| <p>P 139 1941, POW-MAIL: group of three preprinted 'Australian Red Cross Society' envelopes, all sent by airmail at the same rate "5s 8d" from Melbourne via clipper Australia-USA-UK to the International Red Cross Committee in Geneva Switzerland, two envelopes with 5s 'coronation robes' and 2 x 4d 'koala' resp. 2 x 2s 'roo', 1s 'lyrebird', 6d 'kookaburra' and 2d KGV dated Oct.22nd 1941 each, one envelope with 5s 'coronation robes', 6d 'kookaburra' and 2d KGV dated Aug.5th 1941. Scarce group in F/VF condition.</p> | <p>SG ex 134/184    ☒    90,-</p>           |
| <p>P 140 1943/1945, Australian Forces AIRGRAPHS, group of 5 different Airgraph Envelopes with enclosed airgraphs, all sent from or to Australian Forces. Included are two envelopes with depiction 'AIRGRAPH &amp; arrow' (one with No.243), two envelopes with imprint 'AIRGRAPH LETTER' (single- or double-lined) and one envelope with imprint 'airgraph &amp; cloud'. Interesting group in VF condition.</p>  | <p>☒    70,-</p>                            |
| <p><b>Französisch-Ozeanien</b></p>  |   |
| <p>P 141 1903, drei Ansichtskarten nach Frankreich mit Allegorie 5c. (4, davon 1x Mgl.) bzw. 10c., 1x großer Stempel der "ECOLE NORMALE de PAPEETE TAHITI".</p>   | <p>4(4),15    ☒    70,-</p>                 |



**ex Los 140**



**ex Los 141**

## Gilbert- und Ellice-Inseln - Penrhyn

Losnr. Katalognr. Erhalt. Ausruf

### Gilbert- und Ellice-Inseln - Weihnachtsinseln

- P 142 1918, Oct 31, 5c local issue on registered letter with additional French Oceania 10c. and 20c., addressed to Switzerland with transit San Francisco on backside.  
*1918, 31.10., 5c. Lokalmarke auf Recobrief mit zusätzlich Franz.Ozeanien 10c. und 20c., in 1, Frz. Ozeanien die Schweiz, mit Transitstempel von San Francisco.* 28,30 ☒ 180,-

### Nauru

- P 143 1973, 30c bird hunting, two progressive proofs in red and black the latter showing already inscriptions and denomination, both unmounted mint 99 proof \*\* 60,-



Los 142



ex Los 143

### Neukaledonien

- P 144 1899-1911, drei interess. Belege, dabei 15c. Allegorie auf Brief nach Belgien mit belgischem Nachporto (zwei kleine Tesafleckchen am Briefrand); 1907, "F.M." auf 15c. Säerin aus NOUMEA und 1911, bildseitig frankierte AK. ☒ 200,-
- P 145 Aus 1936-38, drei Flugpostbelege mit guten Frankaturen nach Frankreich, dazu ein Flugbrief aus 1951 und FDC 1953 "100 Jahre franz. Beszung" (Mi.Nr. 351-54). ☒ 100,-



ex Los 144



ex Los 145

### Niue

- 146 1984, NIUE: Ausipex Stamp Exhibition miniature sheet with six different KOALA stamps in seven different imperforate PROGRESSIVE PROOFS, mint never hinged and scarce Bl. 75 proof \*\* 50,-

### Penrhyn

- 147 1975. Definitives: Fish of the Pacific. Progressive proof (9 phases) for the complete set (2 values). Each as pairs on a sheet together with colour bars. Some printer's notes. Dated and signed. Little creasing and two pinholes. MNH. 18 proof stamps in all. In this form UNIQUE. 64/65 Proofs \*\* 50,-